

# Arrows and Domain + Range

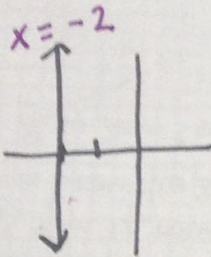
↑ Range  $\infty$

→ Domain  $\infty$

↓ Range  $-\infty$

← Domain  $-\infty$

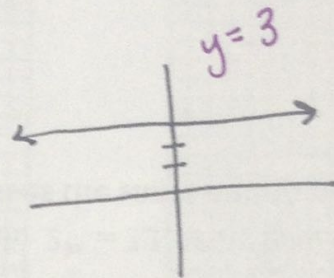
Ex:



D:  $-2$

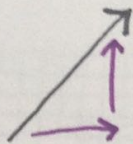
R:  $(-\infty, \infty) \mathbb{R}$

Ex:



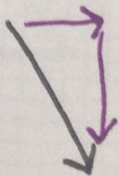
D:  $(-\infty, \infty) \mathmathbb{R}$

R:  $3$



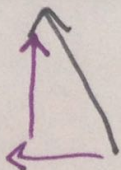
Domain  $\infty$

Range  $\infty$



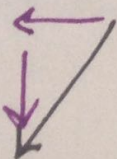
Domain  $\infty$

Range  $-\infty$



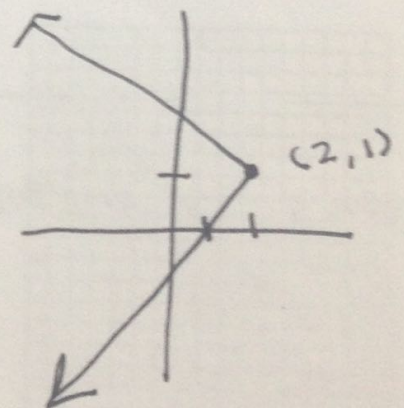
Domain  $-\infty$

Range  $\infty$



Domain  $-\infty$

Range  $-\infty$



D:  $(-\infty, 2]$

R:  $(-\infty, \infty)$

$\mathbb{R}$